

High-density solids pump KOS 740 – compact and powerful

Putzmeister

Requirements:

Market requirements call for a favourably-priced and robust piston pump with low life-cycle costs.

With these requirements in mind, this piston pump is designed to extend the range of the conventional piston pump to smaller-scale applications.

In terms of design, the KOS 740 piston pump has the same features as its „big brother“, e.g.:

- Working pressure up to 60 bar
- Wear parts made from austenitic manganese steel
- The hydraulic and delivery cylinders come from the heavy-duty series

The KOS 740 is used successfully for applications in which delivery rates of up to 8 m³/h for paste-like material are required, for example refuse-derived fuels for the cement industry.

Other areas of application for the KOS 740 include:

- In sewage treatment plants, for conveying mechanically dewatered sewage



KOS 740 in biogas plant in Schlitters/Austria

sludge from wire presses and centrifuges with a solids content of up to 25 % and a proportion of inorganic material (e.g. sand) of up to 60 %

- For conveying biomass for methanation. This biomass contains a considerable proportion of foreign bodies, such as shards of glass, bone fragments and pieces of metal. Thanks to the S transfer tube technology, these

foreign bodies do not present a problem for the KOS 740.

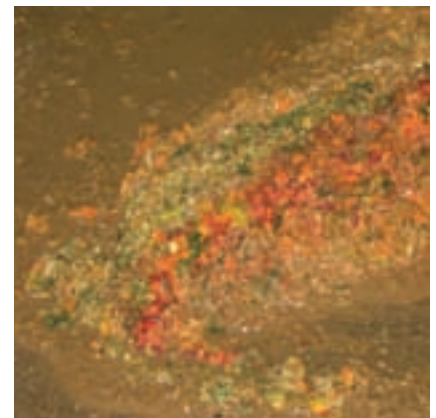
- In the cement industry, the KOS 740 is used for conveying refuse-derived fuels. These sludges are usually mixed with solvents. Because the KOS 740 piston pump can work „fully hydraulically“, it can pump this type of sludge without any further measures being necessary.



Oil sludge

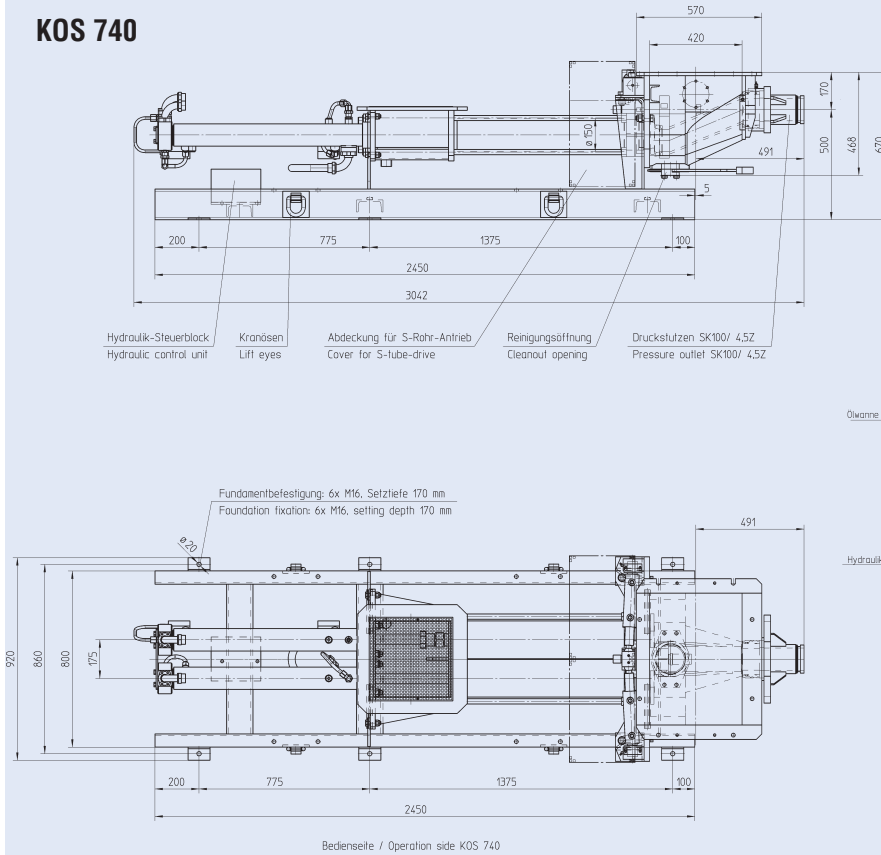


Sewage sludge

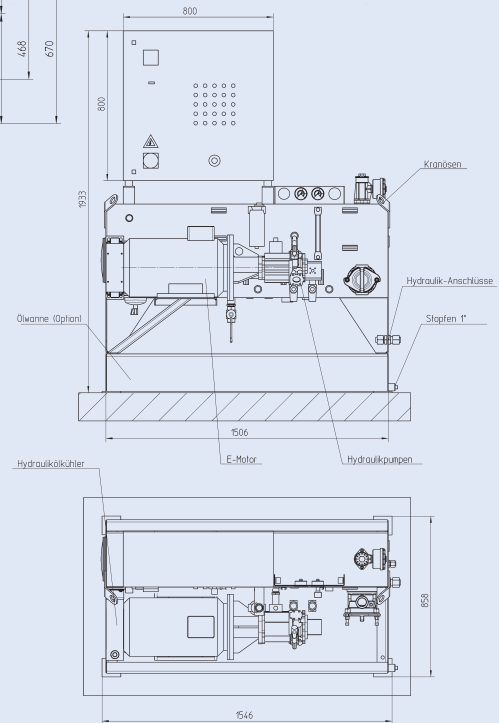


Bio waste

KOS 740



HA 15 CE



Field of application in accordance with ATEX: EEX II 2 G II B T44

Sludges with a viscosity of up to 100,000 cP are no problem for the KOS 740. For higher viscosities, the piston pump can be used with a single or double-shaft precompression screw conveyor in order to increase the fill level.

As standard, the KOS 740 is equipped with:

- A central lubrication manifold for manual lubrication
- Manual output regulation

- Fully hydraulic control (no electrical proximity switches, or similar)
- Single-circuit control for delivery cylinder and S transfer tube

Technical data KOS 740:

| | |
|--------------------------------|----------------------|
| Delivery rate (theor.): | 10 m ³ /h |
| Delivery pressure: | 6 MPa |
| Length of delivery cylinder: | 700 mm |
| Diameter of delivery cylinder: | 150 mm |
| Length: | 3,000 mm |
| Width: | 920 mm |
| Height: | 700 mm |

The HA 15 CE is used to drive the KOS 740. This hydraulic power pack is specially geared to the requirements of the KOS 740.

Technical data HA 15 CE:

| | |
|-----------------------------------|-------------|
| Motor output: | 15 kW |
| Motor speed: | 1,450 U/min |
| Voltage: | 400 V |
| Frequency: | 50 Hz |
| Electric motor protection rating: | IP 55 |

Market Technique Fields

Concrete Technology PCT · Mortar Technology PMT
Pipe Technology PPT · Water Technology PWT
Industrial Technology PIT · Belt Technology PBT
Underground Technology PUC

Right to make technical amendments reserved
© by Putzmeister Concrete Pumps GmbH 2008
All rights reserved
Printed in Germany (0802PM)

Putzmeister Concrete Pumps GmbH
Max-Eyth-Str. 10 · 72631 Aichtal/Germany
P.O.Box 21 52 · 72629 Aichtal/Germany
Tel. +49 (71 27) 599-0 · Fax +49 (71 27) 599-520
E-mail: pmw@pmw.de · www.putzmeister.com

Putzmeister